

STAY UP TO DATE

- [WWW socal-asla.org](http://www.socal-asla.org)
- f [Facebook facebook.com/SOCALASLA](https://www.facebook.com/SOCALASLA)
- t [Twitter twitter.com/SOCALASLA](https://twitter.com/SOCALASLA)
- in [LinkedIn linkedin.com/in/socalasla](https://www.linkedin.com/in/socalasla)

Building/Rebuilding Civic Space in Orange County ~ August 9, 2014

SPONSORED BY:



Description of Event

Event Times:

- 1:00 – 3:00pm – Newport Beach Civic Center Park Tour
- 3:30 – 5:30pm – Building/Rebuilding Public Space in Orange County

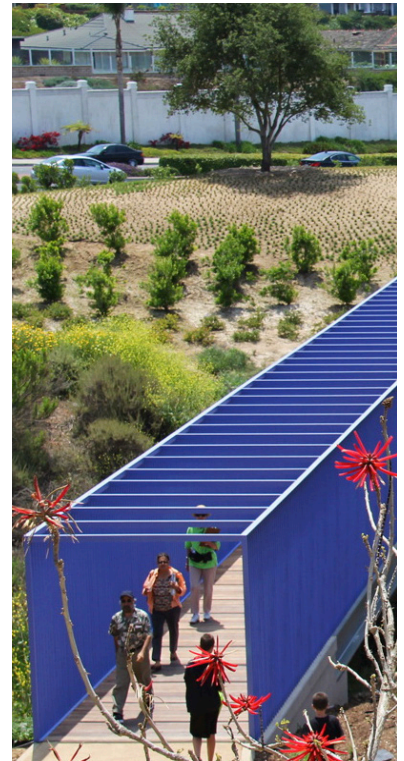
Newport Beach Civic Center Park Tour

100 Civic Center Drive, Newport Beach, CA 92660

The tour will be led by Adam Greenspan, partner at PWP Landscape Architecture and landscape contractor with Park West Companies, Marty McPhee.

The new Civic Center and Park, centrally located on a 16-acre site within Newport Beach and adjacent to the heavily visited Central Library, are conceived as the new civic heart of the community—spaces for governmental and social activities that are both symbolic and functional.

Sustainable practices include on-site storm-water treatment with extensive swales and retention basins integrated into planting. The approach to planting design uses planted systems specifically acclimated to the site to create meaningful and exciting living settings for both human and nonhuman visitors. A variety of scale garden landscapes were developed with native plant communities as well as heritage plant material and drought tolerant ornamental species. Additional criteria of LEED and the Sustainable Sites Initiative, too.



EVENT COST

- \$65 – ASLA Members & Associates
- \$30 – ASLA Students
- \$75 – Non-members

REGISTER FOR THIS EVENT

Visit: <http://bit.ly/1jrjF92>
or to register by phone or for other questions,
please contact Vicki Phillipy @ 714-838-3615.

Building/Rebuilding Civic Space in Orange County ~ August 9, 2014

Building/Rebuilding Public Space in Orange County

Muldoon's Irish Pub, "The Celtic Bar"(private room)
202 Newport Center Drive, Newport Beach, CA 92660
(Light appetizers and Libations will be served)

Few places embody the dilemmas of public space and public life today as provocatively as Orange County. From historic main streets and iconic beach towns to revitalized downtowns, mega-malls, Disneyland and Knotts Berry Farm, Orange County exemplifies the contrast between traditional civic space and a private yet public experience.

The shifting patterns of public life that we see elsewhere are both well established and strikingly absent here, depending on where you are. At the forefront of community and conservation development decades ago, Irvine is riddled with 55 mph arterial streets and those often mocked beige neighborhoods that have come to symbolize all suburbs. As development density increases into apartment and mixed-use communities, its ethnic diversity raises questions on how to embrace and accommodate culture-specific preferences and expectations within places designed for everyone.

An accomplished panel will discuss the complexities of building and rebuilding public space in Orange County and beyond. What is the role of the landscape architect in shaping public spaces today? How is landscape architecture morphing in response to cultural and socio-economic shifts? What are the current methods of conceiving public spaces - as product and process - from the public and private sector perspectives? And finally, is there a disconnect between the designer's intention versus a user's experience, and how might we recognize and negotiate it?

Moderator: Vinayak Bharne, Director of Design, Moule & Polyzoides Architects and Urbanists; Adjunct Associate Professor of Urbanism, University of Southern California

Panelist: Adam Greenspan, Partner at PWP Landscape Architecture

Panelist: Pamela Galera, Principal Project Planner at City of Anaheim

Panelist: Betsey Olenick Dougherty, FAIA, Partner at Dougherty + Dougherty Architecture

An ASLA Event



Thank You, Event Sponsors



EVENT COST

\$65 – ASLA Members & Associates
\$30 – ASLA Students
\$75 – Non-members

REGISTER FOR THIS EVENT

Visit: <http://bit.ly/1jrjF92>
or to register by phone or for other questions,
please contact Vicki Phillipy @ 714-838-3615.